



## SAUDI FELLOWSHIP TRAINING PROGRAM

### Paediatrics Neurosurgery

### Final Written Examination 2020

#### Examination Format:

The Saudi subspecialty fellowship and diplomas final written examination shall consist of one paper with 80-120 multiple-choice questions (single best answer out of four options). 10 unscored items can be added for pretesting purposes.

#### Passing Score:

The passing score is 70%. However, if the percentage of candidates passing the examination before final approval is less than 70%, the passing score must be lowered by one mark at a time aiming at achieving 70% passing rate or 65% passing score whichever comes first. Under no circumstances can the passing score be reduced below 65%.

**Blueprint Outlines:**

No.	Sections	Percentage (%)
1	Head trauma and critical care	10%
2	Pediatric spine and peripheral nerves	7%
3	CNS congenital anomalies	16%
4	Hydrocephalus	10%
5	Neuro-oncology	15%
6	Neuro-vascular	12%
7	Epilepsy and function neurosurgery	7%
8	Basic neurosciences (anatomy, physiology, pathology,...)	15%
Research, Ethics and Professionalism and Patient Safety		8%
<b>Total</b>		<b>100%</b>

**Note:**

Blueprint distributions of the examination may differ up to +/-3% in each category.

**Suggested References:**

- Pediatric Neurosurgery, by AJ Raimondi, Springer, 1996
- Hydrocephalus, by Ahmed Ammar, Springer 2018
- Professionalism and Ethics, Handbook for Residents, Practical guide, Prof. James Ware, Dr. Abdulaziz Fahad Alkaabba, Dr. Ghaiath MA Hussein, Prof. Omar Hasan Kasule, SCFHS, Latest Edition.
- Essentials of Patient Safety, SCHS, Latest Edition.

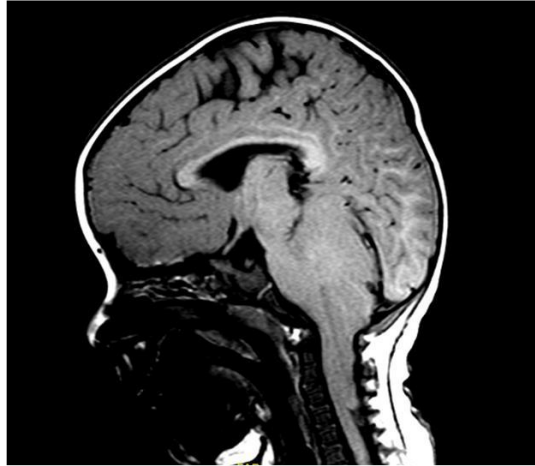
**Note:**

This list is intended for use as a study aid only. SCFHS does not intend the list to imply endorsement of these specific references, nor are the exam questions necessarily taken solely from these sources.

## Example Questions

### EXAMPLE OF K2 QUESTIONS

#### Question 1



A 6-month-old boy was admitted to Pediatric Intensive Care Unit with drowsy, difficulty in breathing and generalized weakness. Magnetic Resonance Imaging was performed (see image).

Which of the following is the most likely diagnosis?

- A. Basilar impregnation
- B. Arnold Chiari Malformation type I
- C. Arnold Chiari malformation type II
- D. Arnold Chiari malformation type III

### EXAMPLE OF K1

#### Question 2

Which of the following is the recurrent artery (Heubneri) originates from?

- A. Internal carotid
- B. Anterior choroid
- C. Anterior cerebral
- D. Anterior communicating