

SAUDI FELLOWSHIP TRAINING PROGRAM

Neuroradiology

Final Written Examination 2020

Examination Format:

The final written exam of Neuroradiology fellowship specialty consists of two papers:

- A. Paper One with 100 multiple choice questions. Ten percent unscored items can be added for pretesting purposes.
- B. Paper Two will include 10 Neuroimaging Short Answer Question (SAQ) sets. Each SAQ set may contain from 2-5 cases with 5-10 questions in each.

Passing Score:

- Paper one accounts for 40% of the total score whereas paper two accounts for 60% of the total exam scoring.
- The passing score is 70%. However, if the percentage of candidates passing the examination before final approval is less than 70%, the passing score must be lowered by one mark at a time aiming at achieving 70% passing rate or 65% passing score whichever comes first. Under no circumstances can the passing score be reduced below 65%.



Blueprint Outlines:

No.	Sections	Percentage (%)
1	Imaging pathology	50%
2	Basic Neurosciences	20%
3	Technical and Imaging Physics	10%
4	Clinical Neurosciences	10%
Research, Ethics and Professionalism and Patient Safety		10%
Total		100%

Note:

Blueprint distributions of the examination may differ up to +/-5% in each category.

Suggested References:

- The Amyrsis series
- Neuroradiology: Key Differential Diagnoses and Clinical Questions- Juan E. Small, Pamela Schaefer
- Neuroradiology: The Requisites- David M. Yousem
- Web resources:
 ASNR Neuro Curriculum----<http://www.asnr.org/asnr/neurocurriculum-live>
 Head Neck Brain Spine---- <http://headneckbrainspine.com>
 Skull Base Anatomy – Wayne State University----
http://www.med.wayne.edu/diagRadiology/Anatomy_Modules/axialpages/Home_Page.html
 E-Anatomy: Radiologic Atlas of the Human Body

Note:

This list is intended for use as a study aid only. SCFHS does not intend the list to imply endorsement of these specific references, nor are the exam questions necessarily taken solely from these sources.



Example Questions

EXAMPLE OF K2 QUESTIONS

Question 1

A 15-year-old woman presented to the Emergency Room with headache and decreasing level of consciousness, a bed side lumbar puncture was performed and a CSF analysis demonstrate: normal CSF pressure, elevated proteins, and normal glucose value. Cytology reveals elevated lymphocytes.

Which of the following is the most likely diagnosis?

- A. GBS
- B. Viral encephalitis
- C. Fungal encephalitis
- D. Bacterial encephalitis

EXAMPLE OF K1

Question 2

A 52-year- old woman was recently diagnosed with a lesion in her subthalamic nucleus.

Which of the following manifestation is most likely expected?

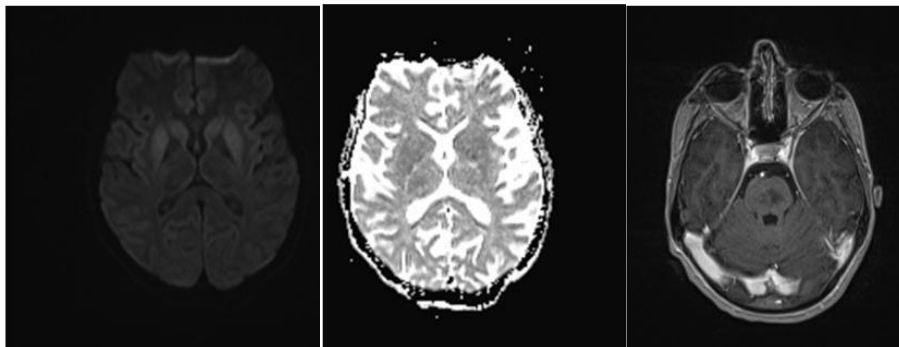
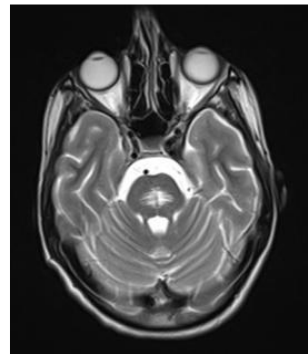
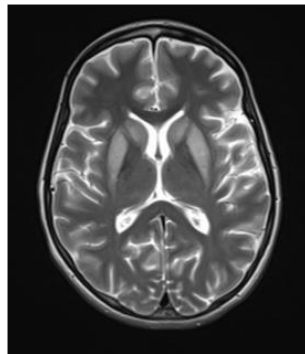
- A. Ataxia
- B. Bradykinesia
- C. Hemiballismus
- D. Parkinsonism

EXAMPLES OF SAQ

Question 3

SAQ 1

A 22-year-old man who was admitted to the intensive care unit following an attack of seizures. Review the images above then answer the questions provided afterwards.



1. What are the findings?
2. Give at least three case appropriate differential diagnosis.
3. What is the most likely diagnosis?
4. Give two underlying etiology for this condition.