

SAUDI BOARD RESIDENCY TRAINING PROGRAM

INTERNAL MEDICINE

Part One Examination

Examination Format:

1. Part I Examination of Saudi board certificate shall consist of one paper with 150 multiple-choice questions (single best answer out of four options). Up to 10% unscored items can be added for pretesting purposes.
2. If any other assessment format is used, the Central Assessment Committee must agree to its implementation.

Passing Score:

1. The passing score is 65%.
2. If the percentage of candidates passing the exam before final approval is less than 70%, the passing score can be lowered by one mark at a time aiming at achieving 70% passing rate or a score of 60% whichever comes first. Under no circumstances, may the score can be reduced below 60%.

Suggested References:

1. Davidson's self-assessment questions
2. Harrison's Textbook of Medicine
3. Harrison's self-assessment questions
4. Medical Knowledge Self-Assessment and Practice (MKSAP)
5. Current Textbook of Medicine
6. Med Studies Reviews
7. Massachusetts Internal Medicine Practice
8. Professionalism and Ethics, Handbook for Residents, Practical guide, Prof. James Ware, Dr. Abdulaziz Fahad Alkaabba, Dr. Ghaiath MA Hussein, Prof. Omar Hasan Kasule, SCFHS, Latest Edition.
9. Essentials of Patient Safety, SCHS, Latest Edition.

** Books for clinical research, professionalism and medical ethics can be downloaded from the Saudi Commission's website:

<http://www.scfhs.org.sa/en/MESPS/TrainingProgs/EduMatActiv/>

Note:

This list is intended for use as a study aid only. SCFHS does not intend the list to imply endorsement of these specific references, nor are the exam questions necessarily taken solely from these sources.

Blueprint Outlines:

No.	SECTIONS	Percentage
1	AMBULATORY CARE	10%
2	CARDIOLOGY	9%
3	CRITICAL CARE	5%
4	ENDOCRINOLOGY	8%
5	GASTROENTEROLOGY	9%
6	HEMATOLOGY	8%
7	INFECTIOUS DISEASES	9%
8	NEPHROLOGY	8%
9	NEUROLOGY	6%
10	ONCOLOGY	5%
11	PULMONARY DISEASES	9%
12	RHEUMATOLOGY	9%
PROFFESIONALISM, PATIENT SAFETY, ETHICHS AND RESEARCH		5%
Total		100%

Details of topics in each section are present in the IM Examination Content Guidelines

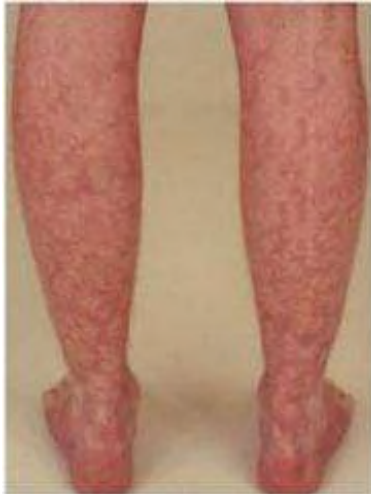
Note:

- Blueprint distributions of the examination may differ up to +/-5% in each category.
- Percentages and content are subject to change at any time. See the SCFHS website for the most up-to-date information.

Example Questions

EXAMPLE OF 2 QUESTIONS

Question 1



A 78-year-old woman presents with recent onset of bilateral calf discomfort and severe pain in her left great toe, at rest which is not affected by leg position. There is no recent trauma. She takes atenolol and hydrochlorothiazide for hypertension. An examination confirms a fourth heart sound and grade 2/6 systolic murmur along the left sternal border. The left first, third and fourth toes are exquisitely tender, cool, and cyanotic. All pulses are palpable (see image and lab results).

Blood pressure	156/90 mmHg
Heart rate	62 /min
Respiratory rate	18/min
Temperature	36.6° C

Test	Result	Normal Values
WBC	9.8	4–10.5 x 10 ⁹ /L
HCT	0.38	0.36–0.47
Platelet count	356	140–400 x 10 ⁹ /L
ESR	75	<30 mm/hr
Blood urea nitrogen	48	2.8–8.9 mmol/L

Which of the following is the most diagnostic test?

- A. Uric acid
- B. Cryoglobulin
- C. Calf muscle biopsy
- D. Antinuclear antibody



EXAMPLE OF K1

Question 2

Which of the following conditions related mortality will be reduced by long term oxygen therapy?

- A. Cystic fibrosis
- B. Chronic asthma
- C. Cryptogenic fibrosing alveolitis
- D. Cor pulmonale due to chronic airflow obstruction