

SAUDI BOARD RESIDENCY TRAINING PROGRAM

Family Medicine

Promotion Examination

Written Examination Format:

- A written examination shall consist of one paper with not less than 100 MCQs with a single best answer (one correct answer out of four options).
- The examination shall contain type K2 questions (interpretation, analysis, reasoning and decision making) and type K1 questions (recall and comprehension).
- The examination shall include basic concepts and clinical topics relevant to the specialty.
- Clinical presentation questions include history, clinical finding and patient approach. Diagnosis and investigation questions; include the possible diagnosis and diagnostic methods. Management questions; including treatment and clinical management, either therapeutic or non-therapeutic, and complications of management. Materials and Instruments questions; including material properties, usage, and selection of instruments and equipment used. Health maintenance questions; include health promotion, disease prevention, risk factors assessment, and prognosis.

Passing Score for Promotion Exam:

The trainee's performance is assessed in each of the evaluation formulas according to the following scoring system:

Score	Less than 50%	50% – 59.4%	60% - 69.4%	More than 70%
Description	Clear Fail	Borderline Fail	Borderline Pass	Clear Pass

1. To upgrade the trainee from a training level to the next level, She/he must obtain at least a **Borderline Pass** in each evaluation form.
2. The program director may recommend to the local supervision committee to request the promotion of the trainee who did not meet the previous promotion requirement according to the following:
 - A. In case that the trainee gets a **borderline Fail** result in **one** of the evaluation forms, the remaining evaluation forms must be passed with **Clear Pass** in at least **one** of them.



- B. In case that the trainee gets a **borderline Fail** result in **two** of the evaluation forms to a maximum, provided they do not fall under the same theme (Knowledge, Attitude, Skills). The remaining evaluation forms must be passed with **Clear Pass** in at least **two** of them.
- C. The promotion must be approved in this case by the scientific council for the specialization.

Blueprint outlines (R1 & R2 & R3):

No.	Section	Proportion%
1	Family Medicine	19%
2	Internal Medicine	11%
3	Pediatric	10%
4	Obstetrics and Gynecology	10%
5	General Surgery	6%
6	Psychiatry	9%
7	Emergency Medicine (Adult and Pediatric)	10%
8	Dermatology	5%
9	Orthopedic and Musculoskeletal	5%
10	Ophthalmology	5%
11	Otolaryngology	5%
12	Radiology	5%
Total		100%

Note:

Blueprint distributions of the examination may differ up to +/-3% in each category.

Suggested References:

Recommended Textbooks:

- Text Book of Family Medicine by Robert E. Rakel, MD
- CURRENT Diagnosis and Treatment in Family Medicine
- Family Medicine: Principles and Practice, by Robert B. Taylor
- McWhinney's Textbook of Family Medicine
- The Color Atlas and Synopsis of Family Medicine

Recommended scientific websites and guidelines:

- ADA: <http://www.diabetes.org/>
- American Family Physician: <https://www.aafp.org/journals/afp.html>
- Medical ethics:
<https://www.scfhs.org.sa/en/elibrary/DocsLibrary/versions/Documents/Medical%20ethics.pdf>
- ICD 11: <https://icd.who.int/>
- Joint National Committee (JNC): <https://sites.jamanetwork.com/jnc8/>
- The United States Preventive Services Task Force: <https://www.uspreventiveservicestaskforce.org/Page/Name/recommendations>
- CDC: <https://search.cdc.gov/search/>
- EBM: <https://www.cebm.net/2014/06/critical-appraisal/>

Other References:

- NICE guidelines: www.nice.org.uk
- www.cochrane.org
- www.uptodate.com

Crash Courses:

- Outline of each course including suggested reading references given by the provider.

Note:

This list is intended for use as a study aid only. SCFHS does not intend the list to imply endorsement of these specific references, nor are the exam questions necessarily taken solely from these sources.



EXAMPLE QUESTIONS

EXAMPLE OF K1 QUESTIONS

Question 1

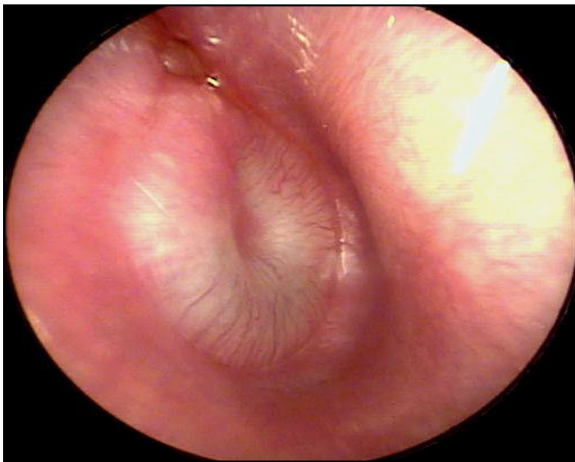
A 48-year-old woman presents with pain, numbness and tingling involve the first 3 fingers and the radial half of the fourth finger. The symptoms are worse at night and often awaken patients from sleep. The patient reacts to these symptoms by shaking or wringing her hands

Which of the following clinical test is used for diagnosis?

- A. Epley maneuver
- B. Phalen maneuver
- C. Heimlich maneuver
- D. Finkelstein maneuver

EXAMPLE OF K2 QUESTIONS

Question 1



A 15-year-old girl presents to the clinic with 1-day history of a painful left ear. There is a history of upper respiratory tract infection that started three days ago (see image).

Which of the following is the most recommended treatment?

- A. Amoxicillin
- B. Gentamicin
- C. Doxycycline
- D. Cyprophloxacin