

SAUDI BOARD RESIDENCY TRAINING PROGRAM

EMERGENCY MEDICINE

Final Written Examination

Examination Format:

1. A Saudi board final specialty written examination shall consist of two papers each with 100-125 SBA MCQs. Ten unscored items can be added for pretesting purposes.
2. If any other assessment format is used, the CAC must agree to its implementation (for example Short Answer Question (SAQ) or Modified Essay Question (MEQ) formats).

Passing Score:

1. The passing score is 70%.
2. If the percentage of candidates passing the examination before final approval is less than 70%, the passing score must be lowered by one mark at a time aiming at achieving 70% passing rate or 65% passing score whichever comes first. Under no circumstances can the passing score be reduced below 65%.

Suggested References:

1. Rosen's Emergency Medicine - Concepts and Clinical Practice - Latest Edition
2. Tintinalli's Emergency Medicine: A Comprehensive Study Guide – Latest Edition
3. Roberts and Hedges' Clinical Procedures in Emergency Medicine - Latest Edition
4. Journal club articles
5. Professionalism and Ethics, Handbook for Residents, Practical guide, Prof. James Ware, Dr. Abdulaziz Fahad Alkaabba, Dr. Ghaiath MA Hussein, Prof. Omar Hasan Kasule, SCFHS, Latest Edition.
6. Essentials of Patient Safety, SCHS, Latest Edition.

Note:

This list is intended for use as a study aid only. SCFHS does not intend the list to imply endorsement of these specific references, nor are the exam questions necessarily taken solely from these sources.


Blueprint Outlines:

No.	Sections	Percentage (%)
1	Resuscitation	10%
2	Cardiovascular	7%
3	Pediatrics	10%
4	Trauma	10%
5	Toxicology/Environmental	10%
6	Obstetrics and Gynecology	4%
7	Neurology/Psychiatry	4%
8	Orthopedic	4%
9	Endocrine/Metabolic	4%
10	EMS/Disaster	4%
11	Gastroenterology	5%
12	*Others	20%
Research, Ethics and Professionalism and Patient Safety		8%
Total		100%

***Others Include:**

- Infectious Disease
- Pulmonology
- Immunology / Inflammatory
- Hematology & Oncology
- Special population (Geriatric)
- Head & Neck
- Nephrology/Urology

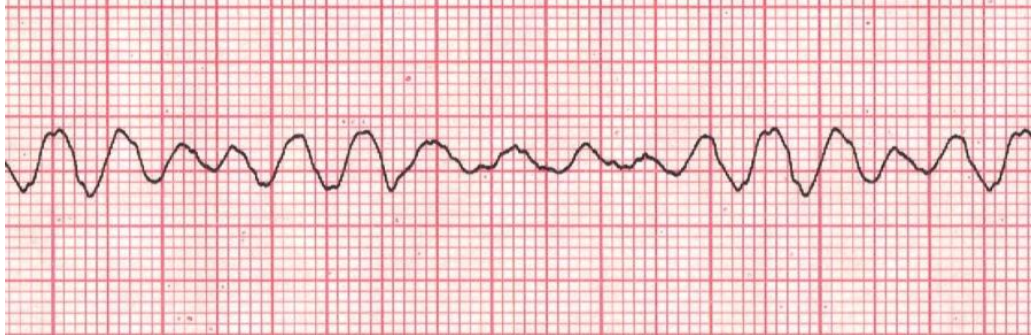
Note:

- Blueprint distribution of the examination may differ up to +/-3% in each category.
- Percentages and content are subject to change at any time. See the SCFHS website for the most up-to-date information.

Example Questions

EXAMPLE OF K2 QUESTIONS

Question 1



A 32-year-old man found in the desert in December. While resuscitating the man, the first rhythm shows ventricular fibrillation. After delivering 1 shock, one dose of epinephrine and chest compression for 2 minutes (see image).

Temperature 18.0° C

Which of the following is the most appropriate next step along with continuous CPR?

- A. NaHCO₃
- B. Epinephrine
- C. Defibrillation
- D. IV fluids 40° C

EXAMPLE OF K1

Question 2

Which of the following is most suggestive of a severe asthma exacerbation?

- A. O₂ saturation 92% on room air
- B. Venous blood gas PCO₂ 45 mmHg
- C. Inspiratory and expiratory wheezes
- D. Peak expiratory flow rate 50% of predicted