

## SAUDI BOARD RESIDENCY TRAINING PROGRAM

### Adult critical care

#### Promotion Examination

##### Written Examination Format:

- A written examination shall consist of one paper with 100 MCQs with a single best answer (one correct answer out of four options).
- The examination shall contain type K2 questions (interpretation, analysis, reasoning and decision making) and type K1 questions (recall and comprehension).
- The examination shall include basic concepts and clinical topics relevant to the specialty.
- Clinical presentation questions include history, clinical finding and patient approach. Diagnosis and investigation questions; include the possible diagnosis and diagnostic methods. Management questions; including treatment and clinical management, either therapeutic or non-therapeutic, and complications of management. Materials and Instruments questions; including material properties, usage, and selection of instruments and equipment used. Health maintenance questions; include health promotion, disease prevention, risk factors assessment, and prognosis.

##### Passing Score for Promotion Exam:

The trainee's performance is assessed in each of the evaluation formulas according to the following scoring system:

Score	Less than 50%	50% – 59.4%	60% - 69.4%	More than 70%
Description	Clear Fail	Borderline Fail	Borderline Pass	Clear Pass

1. To upgrade the trainee from a training level to the next level, She/he must obtain at least a **Borderline Pass** in each evaluation form.
2. The program director may recommend to the local supervision committee to request the promotion of the trainee who did not meet the previous promotion requirement according to the following:
  - A. In case that the trainee gets a **borderline Fail** result in **one** of the evaluation forms, the remaining evaluation forms must be passed with **Clear Pass** in at least **one** of them.



- B. In case that the trainee gets a **borderline Fail** result in **two** of the evaluation forms to a maximum, provided they do not fall under the same theme (Knowledge, Attitude, Skills). The remaining evaluation forms must be passed with **Clear Pass** in at least **two** of them.
- C. The promotion must be approved in this case by the scientific council for the specialization.

### Blueprint Outlines

No.	<u>R1</u> Section	Proportion%
1	Assessment of acutely ill	10
2	Emergency medicine and toxicology	10
3	Anesthesia and perioperative care	10
4	Perioperative care	5
5	Shock	10
6	Mechanical ventilation	10
7	Infectious disease and sepsis	10
8	Respiratory medicine	10
9	Cardiovascular medicine	10
10	Renal, endocrine and metabolic disorders	10
11	Medical Ethics	5
Total		100%



No.	<b>R2, R3</b>	Section	Proportion%
1		statistics and medical ethics	10
2		Neurological disorders	10
3		Renal and endocrine	7
4		Procedures and radiology	3
5		Respiratory disorders	10
6		Cardiovascular disorder	15
7		Infectious disease and sepsis	15
8		Trauma and surgical care	10
9		Hemodynamic assessment and management	10
10		Mechanical ventilation	10
Total			100%

No.	<b>R4</b>	Section	Proportion%
1		Cardiovascular and hemodynamics	15
2		Respiratory disorders, airway management and mechanical ventilation	20
3		Renal, metabolic and endocrine	10
4		Nutrition and GI disorders	5
5		Neurological disorders	10
6		Hematological and oncological disorders	5
7		Surgery and trauma	8
8		Statistics, medical ethics and administrative	10
9		Sepsis and infectious disease	12
10		Radiology, toxicology and procedures	5
Total			100%

**Note:**

- Blueprint distributions of the examination may differ up to +/-3% in each category.
- Percentages and content are subject to change at any time. See the SCFHS website for the most up-to-date information.

**Suggested References:**

1. Marino's The ICU Book, 4th Edition
2. Irwin and Rippe's Intensive Care Medicine Seventh Edition

**Crash Courses:**

- Outline of each course including suggested reading references given by the provider.

**Note:**

This list is intended for use as a study aid only. SCFHS does not intend the list to imply endorsement of these specific references, nor are the exam questions necessarily taken solely from these sources.

## Example Questions

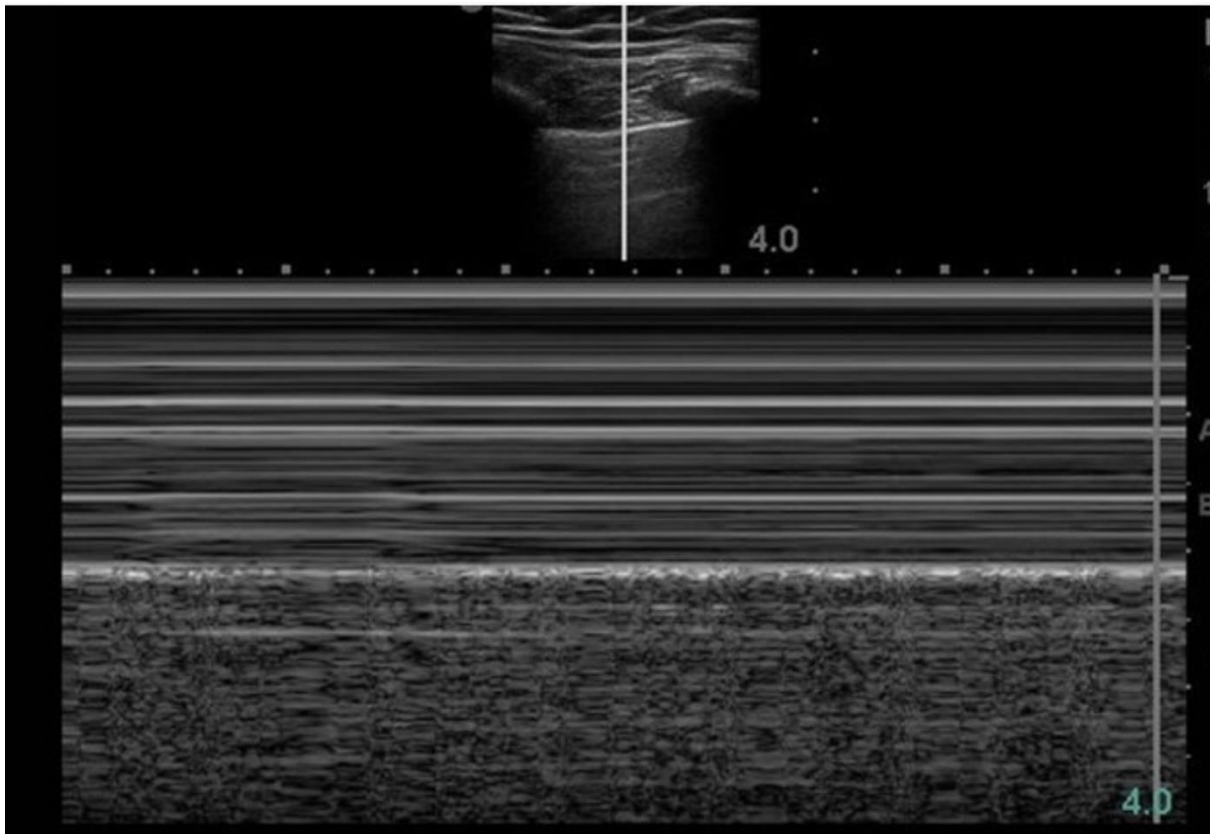
### EXAMPLE OF K1 QUESTIONS

The pulmonary artery “wedge” or occlusion pressure (PAWP) is used in hemodynamic assessment to diagnosis and direct treatment of certain diseases. Which of the following does the PAWP represent a surrogate for?

- A) The ejection fraction (EF)
- B) Left ventricular end-diastolic volume (LVEDV)
- C) Afterload
- D) Oxygen Delivery

### EXAMPLE OF K2 QUESTIONS

After insertion of right Internal jugular central line to a 17 years old patient in the ICU a lung ultrasound was obtained on the right side, see image.



What is the best action to be done?

- a. Remove the central line
- b. Insert a right sided chest tube.
- c. CXR confirmation
- d. No intervention is needed.