

SAUDI BOARD RESIDENCY TRAINING PROGRAM

Ophthalmology

Promotion Examination

Written Examination Format:

- A written examination shall consist of one paper with not less than 100 MCQs with a single best answer (one correct answer out of four options).
- The examination shall contain type K2 questions (interpretation, analysis, reasoning and decision making) and type K1 questions (recall and comprehension).
- The examination shall include basic concepts and clinical topics relevant to the specialty.
- Clinical presentation questions include history, clinical finding and patient approach. Diagnosis and investigation questions; include the possible diagnosis and diagnostic methods. Management questions; including treatment and clinical management, either therapeutic or non-therapeutic, and complications of management. Materials and Instruments questions; including material properties, usage, and selection of instruments and equipment used. Health maintenance questions; include health promotion, disease prevention, risk factors assessment, and prognosis.

Passing Score for Promotion Exam:

The trainee's performance is assessed in each of the evaluation formulas according to the following scoring system:

Score	Less than 50%	50% – 59.4%	60% - 69.4%	More than 70%
Description	Clear Fail	Borderline Fail	Borderline Pass	Clear Pass

1. To upgrade the trainee from a training level to the next level, She/he must obtain at least a **Borderline Pass** in each evaluation form.
2. The program director may recommend to the local supervision committee to request the promotion of the trainee who did not meet the previous promotion requirement according to the following:
 - A. In case that the trainee gets a **borderline Fail** result in **one** of the evaluation forms, the remaining evaluation forms must be passed with **Clear Pass** in at least **one** of them.
 - B. In case that the trainee gets a **borderline Fail** result in **two** of the evaluation forms to a maximum, provided they do not fall under the same theme (Knowledge, Attitude, Skills). The remaining evaluation forms must be passed with **Clear Pass** in at least **two** of them.
 - C. The promotion must be approved in this case by the Scientific Council for the specialization.

Blueprint Outlines

No.	R1, R2, R3 Section	Proportion%
1	Anterior Segment/ Refractive surgery	16%
2	Glaucoma	10%
3	Retina	6%
4	Uveitis	6%
5	Pediatric Ophthalmology	13%
6	Oculoplastic	6%
7	Neuro-ophthalmology	6%
8	Comprehensive (Pathology, General Medicine)	16%
9	Emergency Ophthalmology (All specialties)	18%
10	Optics/Anesthesia	3%
Total		100%

Note:

- Blueprint distributions of the examination may differ up to +/-3% in each category.
- Percentages and content are subject to change at any time. See the SCFHS website for the most up-to-date information.



Suggested References:

Textbook:

1. Basic and Clinical Science Course set 2017-2018 Edition.

Classic Literature:

1. Current Literature.

Crash Courses:

- Outline of each course including suggested reading references given by the provider.

Note:

This list is intended for use as a study aid only. SCFHS does not intend the list to imply endorsement of these specific references, nor are the exam questions necessarily taken solely from these sources.

Example Questions

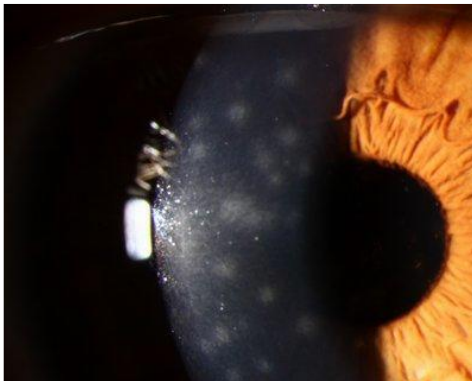
EXAMPLE OF K1 QUESTIONS

What is the cut off number in millimeters for the newborn corneal horizontal diameter below which the diagnosis of microcornea is made?

- A. 7
- B. 9
- C. 10
- D. 11

EXAMPLE OF K2 QUESTIONS

A 30-year-old woman presented to the Emergency Room with redness and tearing of both eyes for 2 days. Her symptoms started in her right eye for 1 day and then appeared in her left eye. Slit lamp finding is shown in the photo (see image).



What is the underlying pathophysiology of her corneal findings?

- A. Contact lens overuse related epithelial erosions
- B. Multiple myeloma associated immune complex deposition
- C. Immunopathologic reaction localized to the anterior stroma
- D. White blood cell aggregation along the endothelium with granuloma formation