

SAUDI BOARD RESIDENCY TRAINING PROGRAM

General Surgery/Plastic Surgery

Part One Examination

Examination Format:

1. Part I Examination of Saudi board certificate shall consist of one paper with 150 multiple-choice questions (single best answer out of four options). Up to 10% unscored items can be added for pretesting purposes.
2. If any other assessment format is used, the Central Assessment Committee must agree to its implementation.

Passing Score:

1. The passing score is 65%.
2. If the percentage of candidates passing the exam before final approval is less than 70%, the passing score can be lowered by one mark at a time aiming at achieving 70% passing rate or a score of 60% whichever comes first. Under no circumstances, may the score can be reduced below 60%.

Suggested References:

1. Sabiston Textbook of Surgery, 20th Edition, 2016. Courtney Townsend et al.
2. Schwartz's Principles of Surgery, Tenth Edition, 2014. F. Charles Brunicaudi et al.
3. Current Surgical Therapy, 12th Edition, 2017, John L. Cameron and Andrew M Cameron.
4. Greenfield's Surgery Scientific Principles and Practice, 5th Edition, 2011. Michael W. Mulholland et al.
5. Fischer's Mastery of Surgery, 6th Edition. 2011, Josef E. Fischer.
6. Professionalism and Ethics, Handbook for Residents, Practical guide, Prof. James Ware, Dr. Abdulaziz Fahad Alkaabba, Dr. Ghaiath MA Hussein, Prof. Omar Hasan Kasule, SCFHS, Latest Edition.
7. Essentials of Patient Safety, SCHS, Latest Edition.

Note:

This list is intended for use as a study aid only. SCFHS does not intend the list to imply endorsement of these specific references, nor are the exam questions necessarily taken solely from these sources.


Blueprint Outlines:

No.	Sections	Percentage (%)
1	Surgical Anatomy	13%
2	Surgical Physiology and Pathology	8%
3	Trauma, Systemic Response to Injury and Metabolic Support	16%
4	Shock, Fluid and Electrolyte Management of Surgical Patient	13%
5	Haemostasis, Surgical Bleeding, and Transfusion	7%
6	Surgical Infection	7%
7	Burn and Wound Healing	5%
8	Surgical Oncology and Transplantation	6%
9	Surgical Critical Care and Bedside Surgical Procedures	6%
10	Principles of pre-operative, Operative, Anaesthesia, and Pain Management	8%
11	Surgical Complications	6%
Research, Ethics and Professionalism and Patient Safety		5%
Total		100%

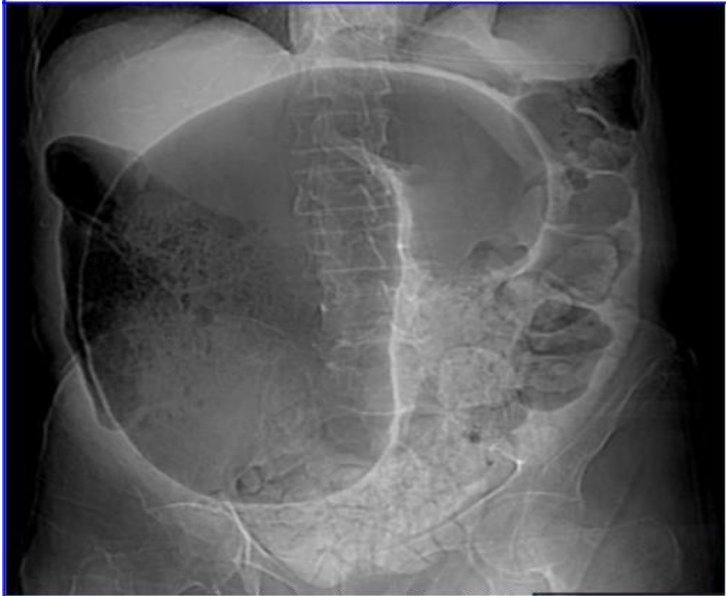
Note:

- Blueprint distributions of the examination may differ up to $\pm 3\%$ in each category.
- Percentages and content are subject to change at any time. See the SCFHS website for the most up-to-date information.

Example Questions

EXAMPLE OF K2 QUESTIONS

Question 1



A 68 year-old man presented with sudden onset of severe lower abdominal pain and vomiting. The patient has not passed a stool for the last 24 hours. On examination, the abdomen is markedly distended and tympanic on percussion (see image).

Blood pressure 150/85 mmHg
Heart rate 120 /min
Respiratory rate 20 /min
Temperature 37.4^o C

Which of the following is the most appropriate treatment?

- A. Rectal tube decompression
- B. Emergency laparotomy
- C. Gastrografin enema
- D. Prokinetic therapy



EXAMPLE OF K1

Question 2

A 50-year-old patient developed a large neck swelling associated with stridor and shortness of breath 4 hours after a total thyroidectomy.

Blood pressure 165/90 mmHg
Heart rate 130 /min
Respiratory rate 24 /min
Temperature 37.0°C

Which of the following is the most appropriate treatment?

- A. Tracheostomy
- B. Close observation
- C. Percutaneous drainage
- D. Bedside wound exploration